



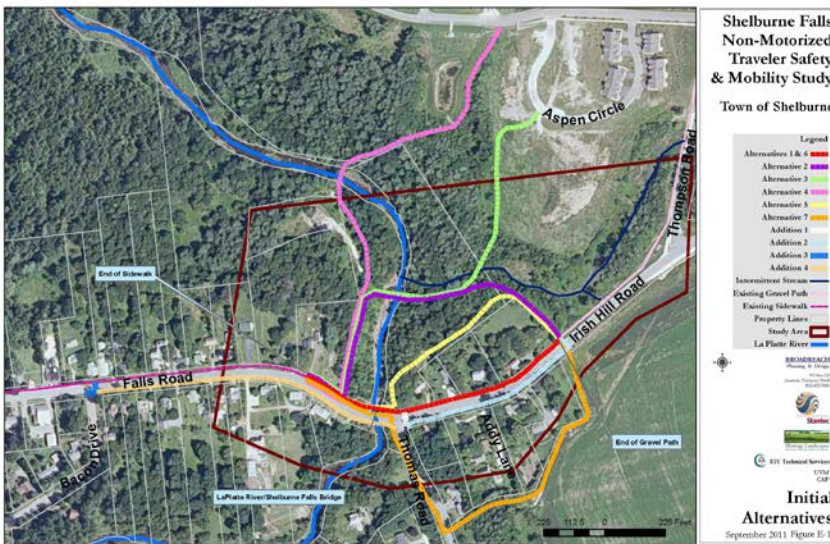
Shelburne Falls Non-Motorized Traveler Safety & Mobility Study - Shelburne, Vermont

Client: The Town of Shelburne

Project Credits: Jim Donovan, Project Manager Broadreach Planning & Design & Stantec, EIV Technical Services, Heritage Landscapes, LLC and the University of Vermont Consulting Archeology Program

Project: Determination of the most appropriate routing for a new bicycle and pedestrian link across the LaPlatte River.

Description: A team led by Broadreach Planning & Design is conducting an analysis of the most appropriate routing and facility type for linking two existing sidewalks on either side of the LaPlatte River and improving bicycle mobility on the roadways leading to and crossing the river. The route is well used by students coming and going to the Shelburne Community School as well as many bicyclists traveling the Lake Champlain Bikeway. The missing link between the two sidewalks forces young pedestrians to either cross the street in two locations with low sight distances or walk along the side of the road in the wrong direction if headed westward.



The options that were studied included using existing nearby pedestrian paths mostly on Town property, new sidewalks on one or both sides of the road, and new shared use paths on either side of the road, as well as numerous different methods of actually crossing the river itself.

Subsequent reviews and public input narrowed the options to a

sidewalk on the north side of the roadway, and three different options for crossing the river.

Contacts: Bernie Gagnon, PE, Director of Public Works, Town of Shelburne, 802-316-1320 bgagnon@shelburnevt.org