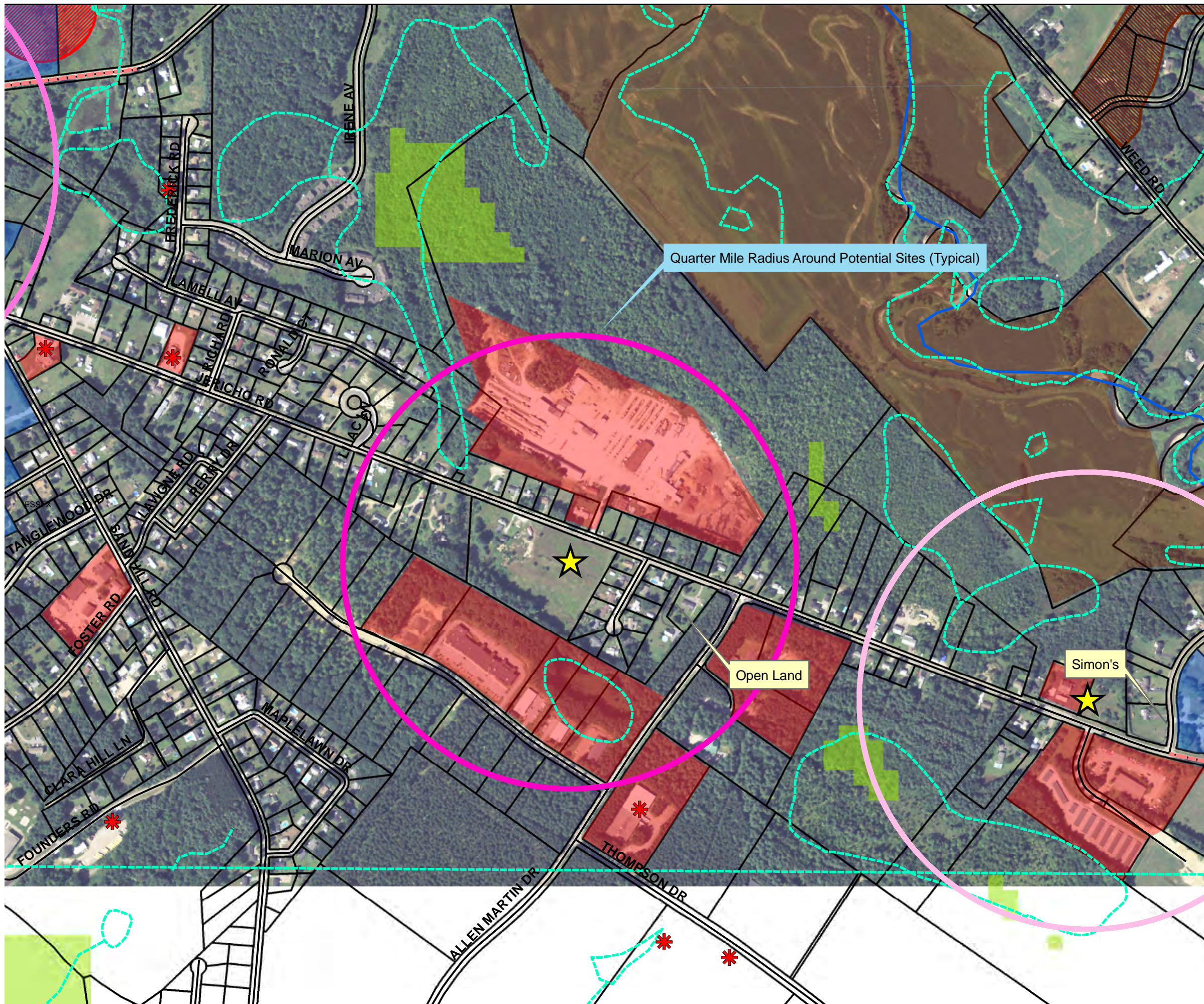


Route 15 Park & Ride/ Bus Stop Study

Chittenden County Regional Planning Commission

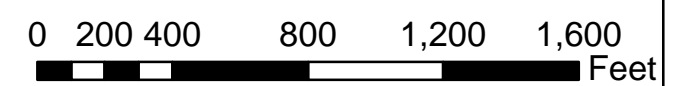


Legend

- Potential Park & Ride
- Hazardous Waste Sites
- Wetlands
- Watercourse
- Rare Threatened & Endangered
- Agricultural Land use
- Commercial Land Use
- Institutional Land Use
- Deer Wintering Area
- Public Land
- Core Habitat 1
- Property Lines
- Roads
- Town Boundaries

Note: The entire area shown on this figure falls within 4 miles of each site.

Existing Conditions Essex East



BROADREACH
Planning & Design

May 31, 2013 Figure C