

Route 15 Park & Ride/Bus Stop Study



EXISTING CONDITIONS & POTENTIAL SITES



Agenda



- **Introductions**
- **Project Introduction; Meeting Objectives & Format; Project Schedule**
- **New Commuter Bus Service Overview**
- **Potential Local Bus Stop/Park & Ride Sites**
- **Existing Conditions Overview**
- **Comments & Questions**
- **Next Steps**

Introductions



- Jim Donovan, FASLA, Broadreach Planning & Design
 - Roger Dickinson, PE, Lamoureux & Dickinson
 - Meredith Birkett, CCTA
 - Peter Keating, CCRPC
-
- Meeting Objectives – Initial Public Review of Project & Long-Term Park & Ride/Bus Stop Locations
 - Meeting Format – Open & Informal
 - Project Schedule – Route Design & Long Term Park & Ride: More Public Work Sessions for Each

Project Overview



- **New Bus Commuter Bus Service for Route 15 – Burlington to Jeffersonville**
- **Short-Term & Long-Term Bus Stops with Park & Ride Lots – Initial Sites Identified in Study**
- **Short-Term – CCTA Proceeding with Route Planning & Short-Term Site Procurement**
- **Long-Term – CCRPC Continuing Comprehensive Study of Long-Term Sites**

Tonight's Meeting



- **Present New Route Information**
- **Present Short & Long Term Potential Sites**
- **Review Comments Received So Far**
- **Discuss Potential Sites**

Jeffersonville-Burlington Commuter Route



SERVICE OVERVIEW AND NEXT STEPS
JUNE 2013



Service Concept Development



- CCTA adopted a Transit Development Plan (TDP) in September 2010.
- The TDP set a vision for the CCTA system and suggested potential future transit services.
- A Jeffersonville-Burlington Commuter connecting Cambridge/Jeffersonville, Underhill, and Jericho to the Chittenden County core was included in the TDP.
- Route 15 from the east into Chittenden County is a major commuting corridor without transit service.

Service Overview



- Monday-Friday service
- Four round trips per day; 2 morning and 2 afternoon
- Trip times would serve peak commuting hours
- Fare: \$2.00/one-way trip, with multi-ride tickets available
- Estimated Ridership: 70 passengers/day in first year
- ***DRAFT*** Schedule – Upcoming public hearings in July

		AM: Jeffersonville-to-Burlington			
		Jeffersonville	Underhill	Jericho	Burlington
AM		5:55	6:15	6:25	7:15
		6:25	6:45	6:55	7:45
		PM: Burlington-to-Jeffersonville			
		Burlington	Jericho	Underhill	Jeffersonville
PM		4:30	5:20	5:30	5:50
		5:00	5:50	6:00	6:20

Funding Sources/Requirements



- **Typical Process for New Service:**
 - Congestion Mitigation Air Quality (CMAQ) grant.
 - CMAQ grants provide federal funding for 80% of the net cost (after fare revenue has been deducted)
 - CMAQ grants are competitive and are awarded by VTrans
 - CMAQ grants require a 20% local match
- **Unusual Opportunity – “Circ Alternatives” Process**
 - Special funding consideration given to projects that would improve transportation in the “Circ communities”
 - State covering 20% local match for first three years of service
 - Jericho, Underhill, and Cambridge asked to contribute \$3,000/year to show commitment to the service – approved on Town Meeting Day 2013.

Next Steps



- **Route Design – May-August 2013**
 - Initial Route Design Public Hearings
 - ✦ July 8th in Jeffersonville
 - ✦ July 15th in Jericho
 - Park & Ride Development (short term and long term)
 - Stop Locations and Schedule Development
 - Route Testing
 - Second Round of Route Design Public Hearings – August 2013
 - CCTA Board approval of Route – September 2013
- **Route Implementation – October 2013**

Potential Sites – Existing Conditions

- Report Available at:
**[broadreachpd.com/
Projects/Current/
Route 15 Bus Route Bus
Stop Study](http://broadreachpd.com/Projects/Current/Route%2015%20Bus%20Route%20Bus%20Stop%20Study)**
- Sites Identified by Steering Committee and Field Work
- Initial Screening for Short-Term Uses

Chittenden County Regional Planning Commission
With the
Lamoille County Planning Commission
The Chittenden County Transportation Authority
and the
Towns of Essex, Jericho, & Underhill;
Cambridge Village & Jeffersonville Village
Vermont Route 15 Park & Ride/Bus Stop Study
Existing Conditions & Potential Sites

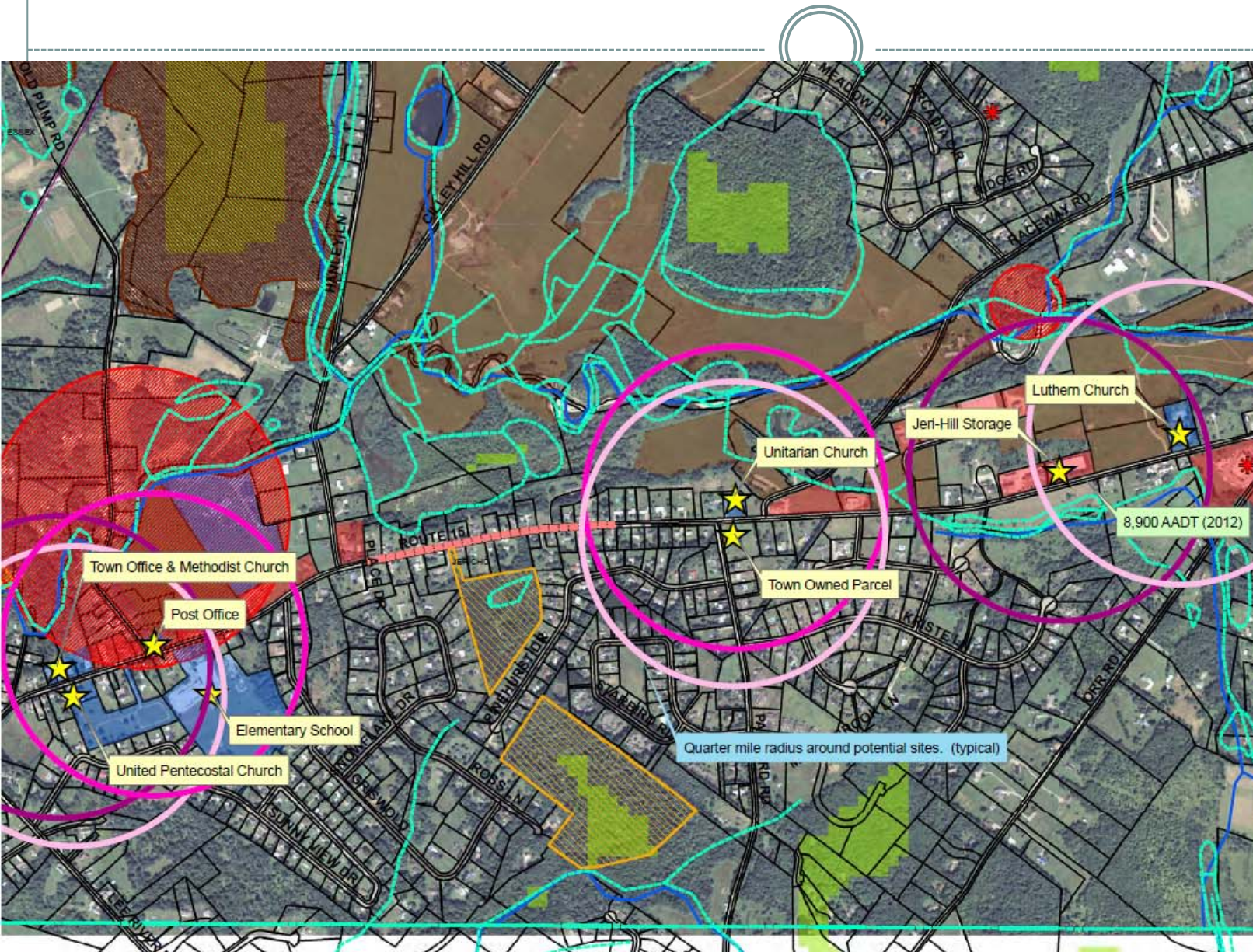


Submitted by:
Lamoureux & Dickinson Consulting Engineers, Inc.

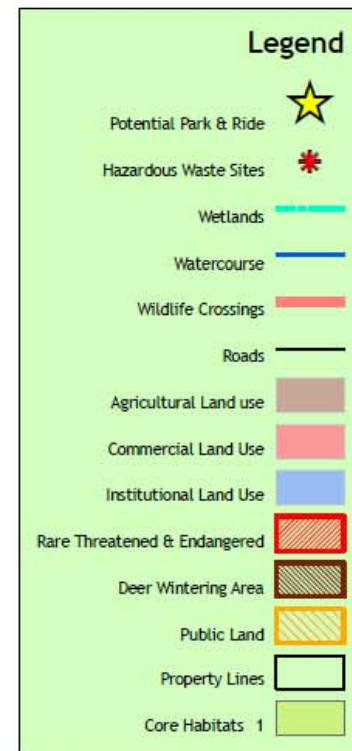
In conjunction with
Broadreach Planning & Design
Heritage Landscapes, LLC

June 18, 2013

Potential Sites - Jericho



Route 15 Park & Ride/
Bus Stop Study
Chittenden County
Regional Planning Commission



Existing Conditions
Jericho

Analysis

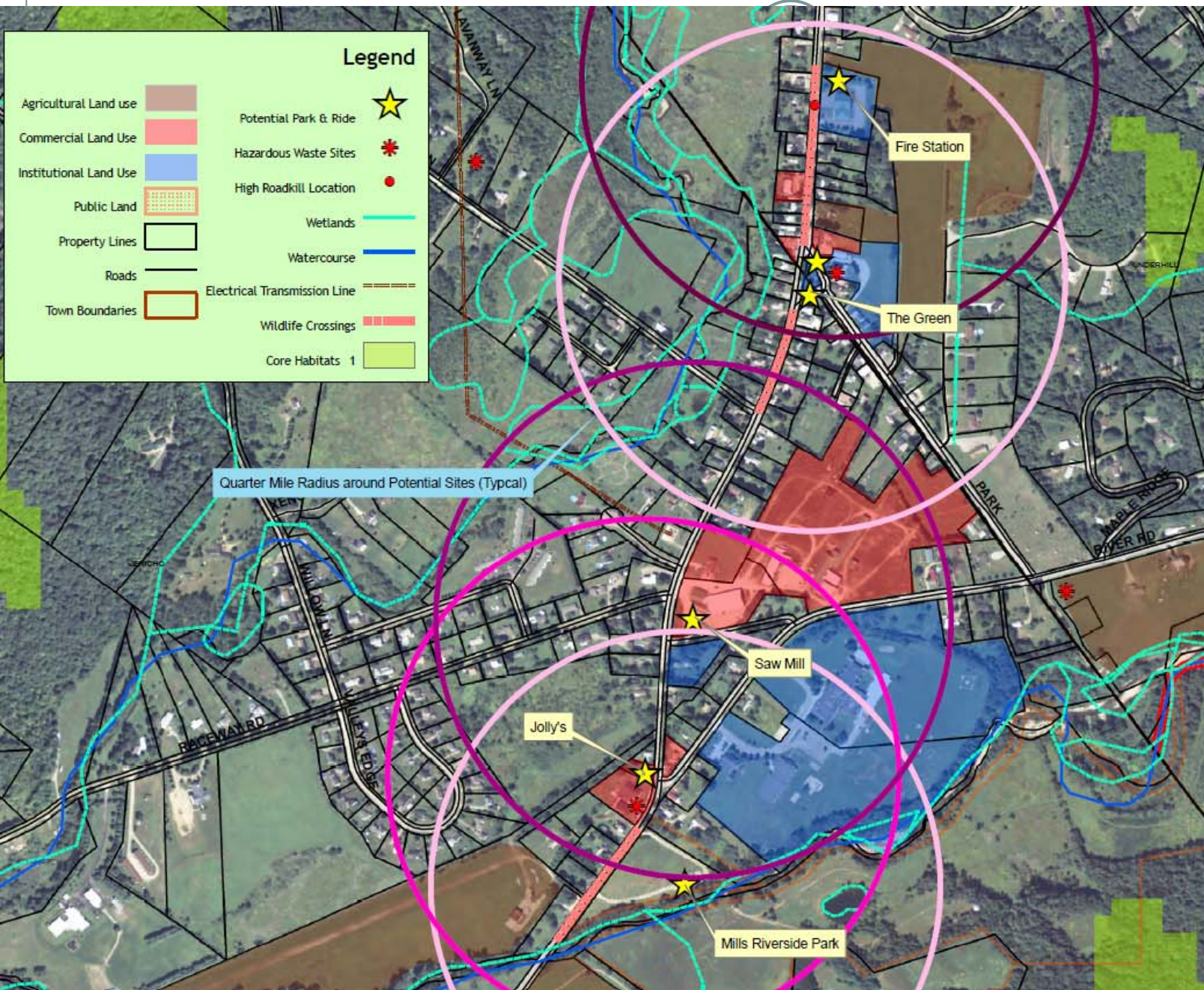


COMMUNITY/SITE JERICO	DESCRIPTION	NUMBER OF POTENTIAL SPACES	BUS ACCESS	USER ACCESS	CONSTRUCTION NEEDS
Town Hall and Methodist Church	The Town Hall and Methodist Church	2± existing spaces (available now)	Acceptable - Stop along the side of Route 15	Easy by car; relatively easy bicycling or walking - crosswalk available for Route 15 in village center	No work needed
United Pentecostal Church	The Church opposite the Town Hall	25+ existing spaces (available now)	Acceptable - Stop along the side of Route 15	Easy by car; relatively easy bicycling or walking - crosswalk available for Route 15 in village center	Some upgrades desirable
Jericho Post Office	The open field on the Post Office lot on the north side of Route 15 east of Old Pump Road	15± new spaces	Acceptable - Stop along the side of Route 15	Easy by car; relatively easy bicycling or walking - crosswalk available for Route 15 in village center	Total new construction
Unitarian Church	The Church on the north side of Route 15 opposite Packard Road	40± existing parking (total)	Acceptable - Stop along the side of Route 15 if crosswalk installed	Easy by car; not easy bicycling or walking - users need to cross Route 15 outside of a village area	Some upgrades desirable
Packard Road Parcel	The Town-owned parcel on the southeast corner of Route 15 and Packard Road	55+ new spaces	Can be designed to be acceptable with access from Packard Road or access on Route 15 with	Easy by car; not easy bicycling or walking	Total new construction
Jeri-Hill Storage	The storage facility west of Browns Trace Road on the north side of route 15	25+ restriped spaces (available)	Acceptable - Stop along the side of Route 15 if crosswalk installed	Easy by car; not easy bicycling or walking - users need to cross Route 15 outside of a village area	Some upgrades desirable
Good Shepard Lutheran Church	Existing parking at the Church west of Bropwns Trace Road on the north side of Route 15	25± existing spaces (total)	Unacceptable - Stop along the side of Route 15 Difficult	Easy by car; not easy bicycling or walking - users need to cross Route 15 outside of a village area	Some upgrades desirable

Comments So Far –

- Problems with Packard Site (Numerous Comments)
- Good Shepherd Church Interested

Potential Sites – Underhill Flats



Route 15 Park & Ride/
Bus Stop Study
Chittenden County
Regional Planning Commission

Note: The entire area shown on this figure falls within a 4 mile radius of each site.

**Existing Conditions
Underhill Flats**

0 15310 620 930 1,240 Feet



BROADREACH
Planning & Design



Analysis: Underhill Flats



COMMUNITY/SITE UNDERHILL FLATS	DESCRIPTION	NUMBER OF POTENTIAL	BUS ACCESS	USER ACCESS	CONSTRUCTION NEEDS
Mills Riverside Park	The public park at the western end of the village area on the south side of Route 15	30± existing spaces (total)	Good - Drive through loop; access not signalized	Easy by car; relatively easy bicycling or walking	Some upgrades desirable
Jiffy	The convenience store on the north side of Route 15 at the intersection with River Road.	2± existing spaces (available)	Acceptable - Stop along the side of Route 15	Easy by car; relatively easy bicycling or walking	Some upgrades desirable
Saw Mill	Existing gravel area at the southeast corner of Route 15 and Dickinson Street.	25+ new spaces	Can be designed to be acceptable	Easy by car; relatively easy bicycling or walking	Reconstruction necessary long-term
The Green	On-street parking around the green next to Park Street	15 to 28 reconfigured spaces (available)	Acceptable - Stop along the side of Route 15	Easy by car; relatively easy bicycling or walking	Reconstruction necessary long-term
Underhill Fire Station	New parking on the north side of the fire station on the south side of Route 15 north of the Park Street intersection	5± new spaces	Stop along the side of Route 15	Easy by car; relatively easy bicycling or walking - user need to cross Route 15 without a crosswalk	Total new construction

Comments So Far –

- None

Discussion



- **Missing Information?**
- **Route Issues?**
- **Missing Sites?**
- **Undesirable Sites?**
- **Suggestions?**
- **Questions?**

Future Work Sessions & Public Meetings



- July 15 – Route Design Public Hearing #1
- August 19-26 – Long Term Park & Ride/Bus Stop Sites Work Session #2
- August – Route Design Public Hearing #2
- September 24-30 Long Term Park & Ride/Bus Stop Sites Work Session #3

Contacts & More Information



Meredith Birkett
CCTA Director of Planning & Marketing
mbirkett@cctaride.org
540-2453

Jim Donovan, Landscape Architect
bikeped@gmavt.net

**Broadreachpd.com/Projects/Current/
Route 15 Bus Route Bus Stop Study**